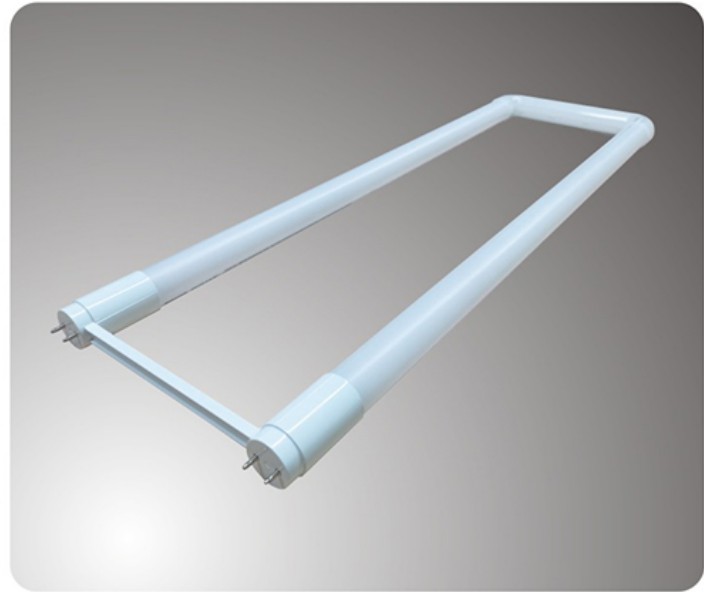


**LED**  
TECHNOLOGY

50000 Hours, 15Watt, 120/270V, 60Hz, 4000Kelvin

Dual Function: Use with fluorescent ballast or direct power connection 120-277VAC



**Applications:**

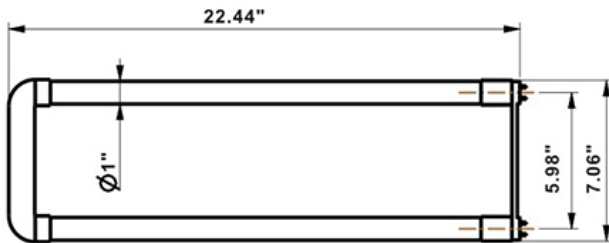
Ceiling Fixtures, Troffers

**Features:**

- Can be operated in luminaire with or without diffuser
- Dual mode internal driver plug and play to most ballasts (type A) or direct connect to line voltage 120-277VAC (type B)
- Seamless light from side to the top of the lamp.

**Specification:**

Input Line Voltage:	Ballast or 120/277VAC
Bare Lamp Power	15W
Input Line Frequency	50/60Hz
Lamp Life (Rated)	50,000hrs
Minimum Starting Temp Preferred	-20°C/-4°F
Maximum Operating Temp Preferred	50°C/124°F
CCT	4000K
CRI	≥80
Lumens	1900
Beam Angle	166°



**WARRANTY**

5-YEARS \*

Model:#	Description	Bare Lamp Wattage	Lumens	Base
LB24T8-U-840	24" T8 Plug-N-Play Lamp or 120-277VAC Direct Wire Connect, Cool white	15W	1900	G13

\*5 Years Limited Warranty

UPC: 806802-155920

