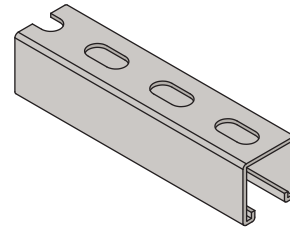
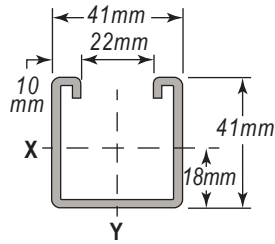
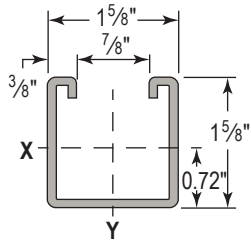




W200SS - 12 Gauge Channel

1⁵/₈" x 1⁵/₈" (41mm x 41mm) with 9/₁₆" x 1¹/₈" Short Slots on 6" centers



W200SS Section Properties

Wt. Lbs./Ft. (Kg/M)	Area of Section in. ² (cm ²)	X-X Axis			Y-Y Axis		
		Ix in. ⁴ (cm ⁴)	Sx in. ³ (cm ³)	rx. in. (cm)	Iy in. ⁴ (cm ⁴)	Sy in. ³ (cm ³)	ry in. (cm)
1.91 (2.84)	0.561 (3.62)	0.188 (7.83)	0.207 (3.39)	0.579 (1.47)	0.238 (9.91)	0.293 (4.80)	0.652 (1.66)

W200SS - Allowable Beam Loads

Span In	Max. Uniform Load Lbs	Defl. at Load In	Uniform Load at Deflection			Lateral Bracing Reduction
			Span /180 Lbs	Span /240 Lbs	Span /360 Lbs	
12	3,132	0.01	3,132	3,132	3,132	1.00
24	1,566	0.06	1,566	1,566	1,566	1.00
36	1,044	0.13	1,044	1,044	819	0.93
48	783	0.23	783	693	459	0.87
60	630	0.35	594	441	297	0.82
72	522	0.51	414	306	207	0.77
84	450	0.70	306	225	153	0.74
96	387	0.89	234	171	117	0.70
108	351	1.15	180	135	90	0.67
120	315	1.42	144	108	72	0.65

Span mm	Max. Uniform Load kN	Defl. at Load mm	Uniform Load at Deflection			Lateral Bracing Reduction
			Span /180 kN	Span /240 kN	Span /360 kN	
300	14.1	0.35	14.1	14.1	14.1	1.00
600	7.1	1.39	7.1	7.1	7.1	1.00
900	4.7	3.13	4.7	4.7	3.8	0.94
1,200	3.5	5.53	3.5	3.2	2.1	0.87
1,500	2.8	8.72	2.7	2.0	1.4	0.82
1,800	2.4	12.52	1.9	1.4	1.0	0.78
2,100	2.0	16.85	1.4	1.0	0.7	0.74
2,400	1.8	22.13	1.1	0.8	0.5	0.71
2,700	1.6	27.93	0.8	0.6	0.4	0.68
3,000	1.4	34.39	0.7	0.5	0.3	0.65

W200SS - Allowable Column Loads

Unbraced Height In	Max. Slot Face Load Lbs	Max. Column Load Applied at C.G.			
		K = 0.65 Lbs	K = 0.80 Lbs	K = 1.0 Lbs	K = 1.2 Lbs
12	3,870	12,430	12,120	11,640	11,110
24	3,620	10,830	9,970	8,830	7,780
36	3,250	8,970	7,780	6,420	5,330
48	2,800	7,300	6,030	4,710	3,820
60	2,410	5,940	4,710	3,650	2,970
72	2,110	4,850	3,820	2,970	2,410
84	1,870	4,060	3,210	2,490	1,990
96	1,680	3,490	2,760	2,120	1,670
108	1,530	3,060	2,410	1,830	KL/r >200
120	1,390	2,710	2,120	KL/r >200	KL/r >200

Unbraced Height mm	Max. Slot Face Load kN	Max. Column Load Applied at C.G.			
		K = 0.65 kN	K = 0.80 kN	K = 1.0 kN	K = 1.2 kN
300	17.3	55.4	54.0	52.0	49.6
600	16.1	48.4	44.7	39.7	35.1
900	14.5	40.3	35.1	29.0	24.1
1,200	12.6	32.9	27.3	21.4	17.3
1,500	10.9	26.8	21.4	16.5	13.5
1,800	9.5	22.0	17.3	13.5	10.9
2,100	8.5	18.4	14.5	11.3	9.1
2,400	7.6	15.8	12.5	9.6	7.6
2,700	6.9	13.8	10.9	8.3	KL/r >200
3,000	6.3	12.3	9.6	KL/r >200	KL/r >200

Beam loads shown are total uniform load, including the channel weight, for a simple span supported at each end that is adequately laterally braced. Refer to pages 3 - 6 for other beam support conditions.