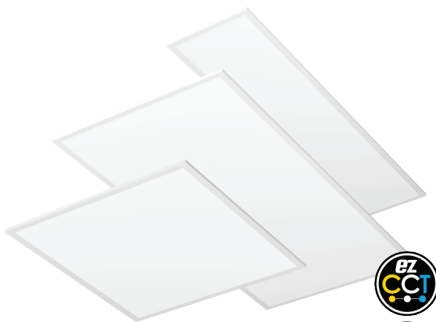


Project:	Catalog#:	Type:
Prepared By:	Notes:	Date:

## E2BPL

Back-lit Flat Panel • 174,000 System Lifetime • 10 Year Limited Warranty



### Overview

Energetic Lighting's E2BPL series is suitable for use in a broad range of commercial applications. Utilizing today's latest innovative LED solutions and technologies paired with world class manufacturing practices, the E2BPL provides customers an affordable LED back-lit panel offering with the perfect blend of design, performance, value and reliability. An extremely versatile product thanks to its low-profile design that is as shallow as many other higher priced edge-lit panels available today. As a result the E2BPL is well suited for installations with shallow plenum access. With our integral ezCCT field-selectable CCT along with flexibility ezWATT field-selectable wattage, these panels extend use to a broad range of commercial and industrial applications. The E2BPL is a great choice for renovation opportunities replacing existing fluorescent luminaires or for new construction projects that require code compliant energy saving LED solutions. Ideally suited for office spaces, schools, retail, hospitality and healthcare applications, the E2BPL provides high quality illumination with optimal energy savings.

### Features

- ezCCT field-selectable CCT - 3500K, 4000K & 5000K @ >80 CRI
- ezWATT field-selectable Wattage - 3 steps, varied by models. (see stock ordering information)
- 2x4, 2x2, and 1x4 configurations available for design flexibility.
- Acrylic over-optics with polymer diffusing lens creates an extremely uniform visual aesthetic and provides target uniform illumination.
- 125+ LPW provides 40-60% in energy savings vs. fluorescent
- Die-formed steel housing won't flex during installation.
- 88% lumen maintenance @ 60,000 hours - L88/60,000 (per IES TM21)
- Projected L70 @ 174,000 hours = maintenance free illumination (per IES TM21)

### Applications

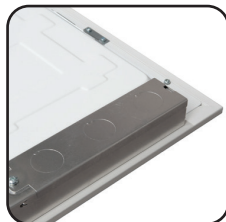
- Indoor, Industrial, and Commercial
- Office, Healthcare, and Educational
- Hospitality and Grocery
- Retail, and Hallways



### Highlights



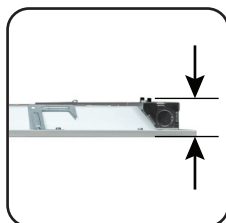
Field-selectable CCT and wattage control provides flexibility to installation and stocking



Various knock-out available for ease of installation and wiring configuration needs



Clean and modern design with easy suspension installation.



Ultra-thin profile at only 1.5 inches saves weight packaging, storage, & challenging plenum clearance scenarios

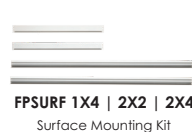


Extruded aluminum lens frame with visually seamless corners



Integrated fold-out seismic hooks with suspension cable mounting hole

### Accessories



### Load Information

Input Voltage	120-347Vac	
Power Factor	>0.9	
THD	<20%	
Low Temp Start	-25°C (-13°F)	
Max Temp	45 °C (113°F)	
Unit Weight	1x4	6 lbs
	2x2	TBA lbs
	2x4	11 lbs

### Shipping Information

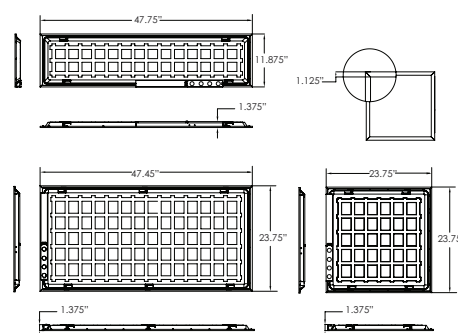
Item	Weight	Box Qty.
1x4	15.5 lbs	2 per case
2x2	TBA lbs	2 per case
2x4	27 lbs	2 per case

### Lumen Maintenance

Ambient Temperature	TM-21 Lumen Maintenance (50,000 hours)	Theoretical L70 (hours)
25°C	>88%	174,000
25°C	>88%	174,000
25°C	>88%	174,000

### Dimensions

E2BPL1-H2130D-83550 | E2BPL2-H2130D-83550 | E2BPL4-H3645D-83550



### Specific Lumen Output

Profile	Wattage Setting	Color Temperature Setting		
		3500K	4000K	5000K
2x4	36W	4500	4700	4650
	40W	5000	5200	5150
	45W	5625	5900	5850
2x2	21W	2625	2700	2650
	25W	3125	3200	3150
	30W	3750	3800	3780
1x4	21W	2625	2600	2650
	25W	3125	3200	3150
	30W	3750	3850	3800



## Model Ordering Number

Series Prefix	Size	Voltage	Wattage	Dimming	CRI	CCT
<b>E2BPL</b>	<b>4</b>	<b>H</b>	<b>3040</b>	<b>D</b>	<b>8</b>	<b>3550</b>
<b>E2BPL</b> Energetic LED Back-lit Flat Panel ezWATT & ezCCT Selectable	<b>1</b> 1x4 <b>2</b> 2x2 <b>4</b> 2x4	<b>H</b> 120-327V	<b>3040</b> 30W-36W-40W <b>2130</b> 21W-25W-30W <b>3040</b> 30W-36W-40W <b>3645</b> 30W-36W-40W <b>36</b> 36W <b>40</b> 40W	<b>D</b> 0-10V Dimmable(default)	<b>8</b> 80 CRI	<b>3550</b> 3500K, 4000K, or 5000K <b>40</b> 4000K <b>50</b> 5000K

**Ordering Examples:**

1. For E2BPL 2x4 36-40-45W ezWATT & CCT Selectable 120-347V	Model#: <b>E2BPL4-H3645D-83050</b>
2. For E2BPL 2x4 36-40-45W ezWATT & CCT Selectable 120-347V + Cable Suspension Kit 2x4 +Surface Mounting Kit 2x4	Model#: <b>E2BPL4-H3645D-83050</b>
Cable Suspension Kit	FPSUSP
Surface Mounting Kit for 2x4	EPSURF24

## STOCK ORDER INFORMATION

### 1x4 | 2x2 | 2x4 Profile Housing 120-347V & 120-277V

1x4 | 2x2 | 2x4 profile

Model Number	Order #	Lumens	Wattage	LPW	Color Temp	CRI	Voltage	Dimming	DLC	Pallet Qty
E2BPL1-H2130D-83550	65280	2625LM/3125LM /3750LM CCT	21W-25W-30W Selectable	125	3500K,4000K,& 5000K CCT	84	120-347V	0-10V	DLC-5.1P	TBA
E2BPL2-H2130D-83550	65281	2625LM/3125LM /3750LM CCT	21W-25W-30W Selectable	125		84	120-347V	0-10V	DLC-5.1P	30
E2BPL4-H3645D-83550	65279	4500LM/5000LM /5625LM CCT	36W-40W-45W Selectable	125		84	120-347V	0-10V	DLC-5.1P	TBA
E2BPL4-3040D-83550	65297	3750LM/4375LM /5000LM CCT	30W-35W-40W Selectable	125		80	<b>120-277V</b>	0-10V	DLC-5.1S	TBA
E2BPL4-H36D-840	65299	4500LM	36W	125	4000K	84	120-347V	0-10V	DLC-5.1P	TBA
E2BPL4-H36D-850	65300	4500LM	36W	125	5000K	84	120-347V	0-10V	DLC-5.1P	TBA
E2BPL4-H40D-840	65301	5000LM	40W	125	4000K	84	120-347V	0-10V	DLC-5.1P	TBA
E2BPL4-H40D-850	65302	5000LM	40W	125	5000K	84	120-347V	0-10V	DLC-5.1P	TBA

### Optional Accessories

Accessories

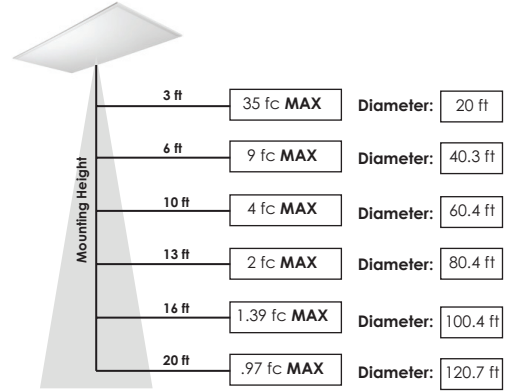
Model Number	Order #	Description
FPSUSP	65153	Cable Suspension Kit
E1RFK-14	99030	1x4 Recessed Flange Kit
E1RFK-22	99031	2x2 Recessed Flange Kit
E1RFK-24	99032	2x4 Recessed Flange Kit
EPSURF14	99030	1x4 Flat panel surface mount
EPSURF22	99031	2x2 Flat panel surface mount
EPSURF24	99032	2x4 Flat panel surface mount



**PHOTOMETRIC DATA**

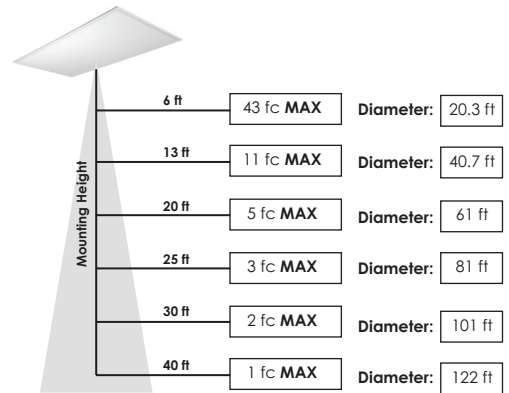
Model: E2BPL2-H2130D-83550  
Test Report: E2BPL2-H21390D-83550.ies  
CCT: 5000  
Lamp Type: LED  
Lumens: 4400 LM  
Input Watts: 40 W  
Efficacy: 110 LM/W

**Lumen Intensity Graph:**  
E2BPL2-H2130D-83550



Model: E2BPL4-H3645D-83550  
Test Report: E2BPL4-H3645D-83550.ies  
CCT: 5000  
Lamp Type: LED  
Lumens: 4950 LM  
Input Watts: 45 W  
Efficacy: 110 LM/W

**Lumen Intensity Graph:**  
E2BPL4-H3645D-83550



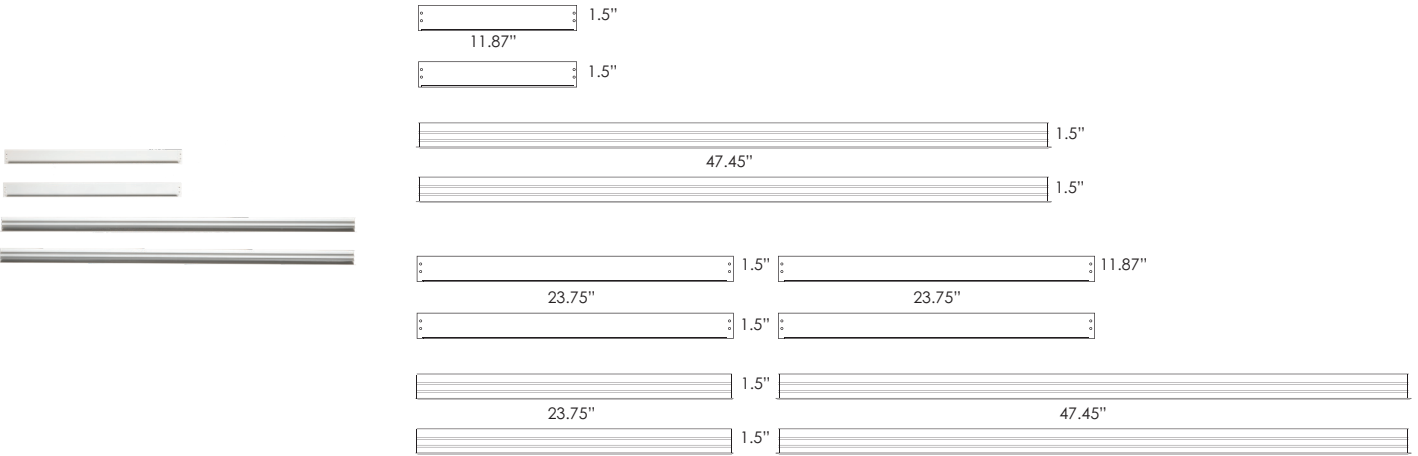


**Accessories Dimensions**

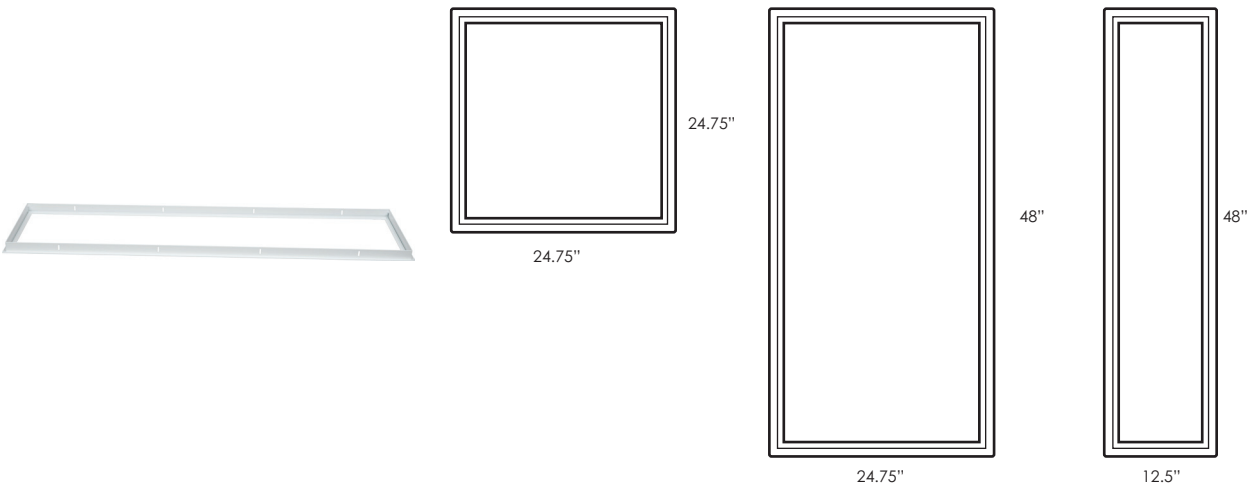
**FPSUSP Cable Suspension Kit**



**FPSURF Surface Mount Kit 1x4 | 2x2 | 2x4**



**E1RFK Recessed Flanged Kit 1x4 | 2x2 | 2x4**





**ENERGETIC**<sup>®</sup>  
L I G H T I N G

## E2BPL

EzCCT & ezWATT Selectable • Back-lit Flat Panel  
174,000 System Lifetime • 10 Year Limited Warranty

### NOTES: